

## MASKING TAPE

- Panamax® masking tape is a pressure sensitive tape used for wall and wood working.
- A must have product for Carpenters and Painter's work area.
- The best selling in paint masking, door painting, laminate pasting, house decoration, construction sites and car body repairing and painting applications etc.



## HIGH TEMPERATURE MASKING TAPE

- High temperature resistant grades in 80° C., 95° C., 120° C. and 160° C.
- Holds substrate strongly.
- No adhesive transfer after removal.
- Saves time and labor (doesn't require any cleaning after removal).
- Tear easily from the roll.



**PANAMAX TAPES INTERNATIONAL**

An ISO 9001 : 2015 Certified Co.

Regd. Office : G-23, Sector-1, Bawana Industrial Area, Bawana Delhi-110039 India

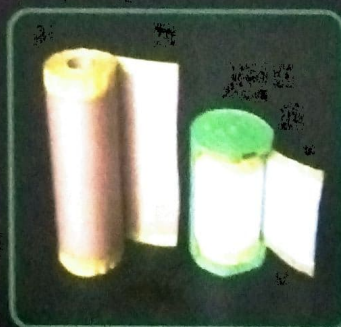
Phone : +91-9718634000, 9718734000, 9718834000

Email : [info@panamaptapes.com](mailto:info@panamaptapes.com), Website : [www.panamaptapes.com](http://www.panamaptapes.com)

ALL REGULAR / CUSTOMIZED  
SIZE AVAILABLE

# PRE - TAPE MASKING FILM

- Available in different sizes that make masking process easier.
- Tape is applied along one edge of high density masking film.
- Easy & fast removable from all surfaces.
- Environment friendly & recyclable.
- Prevent from paints and over spray.
- Does not required any applicator.
- Upgrade version of masking process for the vehicle painting.
- Coast saving for boby shops.
- Easily mask of large area such as windows, doors, marine, cars etc.



ALL REGULAR / CUSTOMIZED  
SIZE AVAILABLE

**PANAMAX TAPES INTERNATIONAL**

An ISO 9001 : 2015 Certified Co.

Regd. Office : G-23, Sector-1, Bawana Industrial Area, Bawana Delhi-110039 India

Phone : +91-9718634000, 9718734000, 9718834000

Email : [info@panamaptapes.com](mailto:info@panamaptapes.com), Website : [www.panamaptapes.com](http://www.panamaptapes.com)



# PANAMAX<sup>®</sup>

WE MAKE THINGS STICK

IS 7809



Part 3, Section 1  
F-PVCp/90/0/Tp/FR  
CM/L No. 8100077009

• SMS TAPE TO 52424

## PVC ELECTRICAL INSULATION TAPE



WORLD  
BEST



- RELIABLE SELF-EXTINGUISHING ELECTRICAL INSULATION TAPE
- INSULATION & PROTECTION TO WIRES OF ELECTRICAL APPLIANCES & MACHINES
- STRETCHABLE, GRIPS FIRMLY & MOULD ITSELF TO ANY SURFACE

COLOR AVAILABLE :-  
BLACK, BLUE, GREEN,  
YELLOW, RED & WHITE

PANAMAX TAPES INTERNATIONAL

An ISO 9001 : 2015 Certified Co.

Regd. Office : G-23, Sector-1, Bawana Industrial Area,  
Bawana, Delhi-110039 (INDIA)

Phone : +91-9718634000, 9718734000, 9718834000

Email : [info@panamaptapes.com](mailto:info@panamaptapes.com)

Website : [www.panamaptapes.com](http://www.panamaptapes.com)

# PVC ELECTRICAL INSULATION TAPE

*Best Quality With Economical Prices*



- RELIABLE SELF-EXTINGUISHING ELECTRICAL INSULATION TAPE
- INSULATION & PROTECTION TO WIRES OF ELECTRICAL APPLIANCES & MACHINES
- STRETCHABLE, GRIPS FIRMLY & MOULD ITSELF TO ANY SURFACE

COLOR AVAILABLE :-  
BLACK, BLUE, GREEN,  
YELLOW, RED & WHITE

**PANAMAX TAPES INTERNATIONAL**

An ISO 9001 : 2015 Certified Co.

Regd. Office : G-23, Sector-1, Bawana Industrial Area,  
Bawana, Delhi-110039 (INDIA)

Phone : +91-9718634000, 9718734000, 9718834000

Email : [info@panamaptapes.com](mailto:info@panamaptapes.com)

Website : [www.panamaptapes.com](http://www.panamaptapes.com)



• SMS TAPE TO 52424

## WOOD GUARD™

### PROTECTION TAPE FOR

- WOODEN DOOR
- GLASS
- FURNITURE
- DOOR AND WINDOWS
- ALUMINIUM AND METAL FLOORING



SIZE :- 610MM X 50MTR

**PANAMAX TAPES INTERNATIONAL**

An ISO 9001 : 2008 Certified Co.

Regd. Office : G-23, Sector-1, Bawana Industrial Area, Delhi-110039

Phone : +91-9718634000, 9718734000, 9718834000

Email: [info@panamaptapes.com](mailto:info@panamaptapes.com), Website : [www.panamaptapes.com](http://www.panamaptapes.com)



• SMS TAPE TO 52424

## FLOOR PROTECTOR™

- MARBLE FLOORING
- WOODEN FLOORING
- CARPET FLOORING



SIZE :- 610MM X 50MTR

**PANAMAX TAPES INTERNATIONAL**

An ISO 9001 : 2008 Certified Co.

Regd. Office : G-23, Sector-1, Bawana Industrial Area, Delhi-110039

Phone : +91-9718634000, 9718734000, 9718834000

Email : [info@panamaptapes.com](mailto:info@panamaptapes.com), Website : [www.panamaptapes.com](http://www.panamaptapes.com)



# PANAMAX<sup>®</sup>

WE MAKE THINGS STICK<sup>™</sup>

• SMS TAPE TO 52424



## PACKAGING / CUSTOMIZED PRINTED TAPE

- Each of our packaging tapes designed with a specific purpose in mind.
- Heavy duty tape is designed for heavy packaging and rough handling.
- Ready to ship, move and store as well.
- Designed to solve any packaging problem, provide security and strength to your packaging.



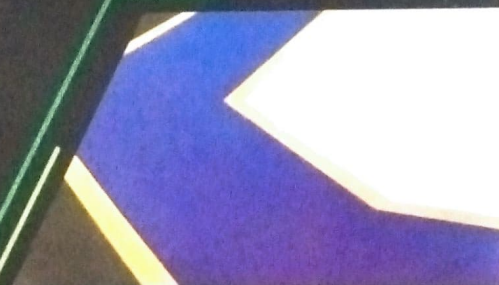
## SURFACE PROTECTION TAPE

- We are specialized to make protection film for any type of surface.
- Preserving the quality and impeccable finish of your surfaces without leaving residue, stains and marks once the film is removed.
- We offer personalized products by overprinting your logo of the brand or any technical message.
- Various sizes and colors available as per your requirements.



## FLOOR MARKING TAPE

- Available in various vibrant colors.
- Available in variety of widths & lengths.
- Available with higher reflectivity and glow in Dark.
- Much faster and easier to install & replace compare to paints.



## CHROME FINISH TAPE

- Surface protection film for chrome finish
- Protect your chrome
- Protect your mattel



ALL REGULAR / CUSTOMIZED  
SIZE AVAILABLE

## PANAMAX TAPES INTERNATIONAL

An ISO 9001 : 2008 Certified Co.

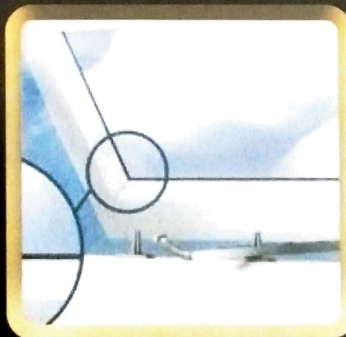
Regd. Office : G-23, Sector-1, Bawana Industrial Area, Bawana Delhi-110039 (INDIA)

Phone : +91-9718634000, 9718734000, 9718834000

Email : [info@panamaptapes.com](mailto:info@panamaptapes.com), Website : [www.panamaptapes.com](http://www.panamaptapes.com)

## SPACER AND EVA FOAM TAPE

- High performance double sided and single sided adhesive coated tapes for bonding over irregular surfaces.
- Smooth texture.
- Used in various applications such as mounting, sealing, cushioning and gasketing.
- Available in various thickness.
- Various grades of foam tape are available.
- Used for noise reduction and vibration controlling in the industries.



ALL REGULAR / CUSTOMIZED  
SIZE AVAILABLE

**PANAMAX TAPES INTERNATIONAL**

An ISO 9001 : 2008 Certified Co.

Regd. Office : G-23, Sector-1, Bawana Industrial Area, Bawana Delhi-110039 (INDIA)

Phone : +91-9718634000, 9718734000, 9718834000

Email : [info@panamaptapes.com](mailto:info@panamaptapes.com), Website : [www.panamaptapes.com](http://www.panamaptapes.com)

# ACRYLIC FOAM TAPES

## 0.4mm THB ACRYLIC FOAM TAPE

- THB tapes are high strength bonding tapes and a proven alternative to screws, rivets, welds and other mechanical fasteners.
- Bonding light weight skins to frames.
- Bonding stiffeners to panels.



## 0.8mm THB ACRYLIC FOAM TAPE

- Attaching decorative materials.
- Assembling electronics.
- Hanging signs and letters.



## 1mm THB TRANSPARENT ACRYLIC FOAM TAPE

- Available in transparent color too specially for glass to glass joining which leads to better appearance.
- Seals against the environment.
- Helps to cut costs and increase productivity.



## 1.2mm THB ACRYLIC FOAM TAPE

- Mounting of pvc stay bars
- Metal to metal bonding
- Ability to fill gaps



## 2mm THB ACRYLIC FOAM TAPE

- Mainly used in structural glazing, aluminum composite panel, windows and doors bonding and many other places.
- A totally high bonded strength which replaces rivets, bolts, welds and other mechanical fixings.



ALL REGULAR / CUSTOMIZED  
SIZE AVAILABLE

**PANAMAX TAPES INTERNATIONAL**

An ISO 9001 : 2008 Certified Co.

Regd. Office : G-23, Sector-1, Bawana Industrial Area, Bawana Delhi-110039 (INDIA)

Phone : +91-9718634000, 9718734000, 9718834000

Email : [info@panamaptapes.com](mailto:info@panamaptapes.com), Website : [www.panamaptapes.com](http://www.panamaptapes.com)

# MIRROR MOUNTING TAPE



- Precised for indoor use only.
- Humidity-resistant adhesive provides a powerful hold in humid environments.
- Delivers a strong, permanent bond on contact.
- Hold mirror to base without screws.
- Save time and labour.
- No More Nails, Glues, Screws, Revets.
- No Drilling. No Sealant.
- Save Time. Easy To Apply.
- Hold Mirror To Base without Screws.

**Size: 24MM X 5Mtr.**

**PANAMAX TAPES INTERNATIONAL**

An ISO 9001 : 2008 Certified Co.

Regd. Office : G-23, Sector-1, Bawana Industrial Area, Bawana Delhi-110039 India

Phone : +91-9718634000, 9718734000, 9718834000

Email.: [info@panamaptapes.com](mailto:info@panamaptapes.com), Website : [www.panamaptapes.com](http://www.panamaptapes.com)

# MULTI STICK TAPE



## EXTREMELY STRONG ADHESIVE

- EXTRA CLEAR TAPE
- SOLUTION FOR BONDING THINGS
- 0.5 & 1MM THICKNESS

“चिपकायें  
चुटकी में”

*Just Simple, Fix Anything*

### Like

- ✓ MARBLE TO GLASS
- ✓ WOOD TO MIRROR
- ✓ WOOD TO MARBLE
- ✓ METAL TO GLASS
- ✓ GLASS TO STEEL
- ✓ STEEL TO WOOD



Size - 24mm x 1mm x 5mtr  
 12mm x 1mm x 5mtr  
 24mm x 0.5mm x 10mtr  
 12mm x 0.5mm x 10mtr

**PANAMAX TAPES INTERNATIONAL**

An ISO 9001 : 2008 Certified Co.

Regd. Office : G-23, Sector-1 Bawana Industrial Area, Bawana Delhi-110039 (INDIA)

Phone : +91-9718634000, 9718734000, 9718834000

Email : [info@panamaptapes.com](mailto:info@panamaptapes.com), Website : [www.panamaptapes.com](http://www.panamaptapes.com)



• SMS TAPE TO 52424

# ARCHITECTURAL METAL CLADDING TAPE (FOR A.C.P.)



- GENERAL PURPOSE CLADDING TAPE IS VIBRATION-ABSORBING AND COMPENSATES DIFFERENT COEFFICIENTS OF LINEAR THERMAL EXPANSION
- MOUNTING OF PVC STAY BARS
- METAL TO METAL BONDING
- ABILITY TO FILL GAPS
- TEMPERATURE RESISTANT



ALL REGULAR / CUSTOMIZED  
SIZE AVAILABLE

**PANAMAX TAPES INTERNATIONAL**

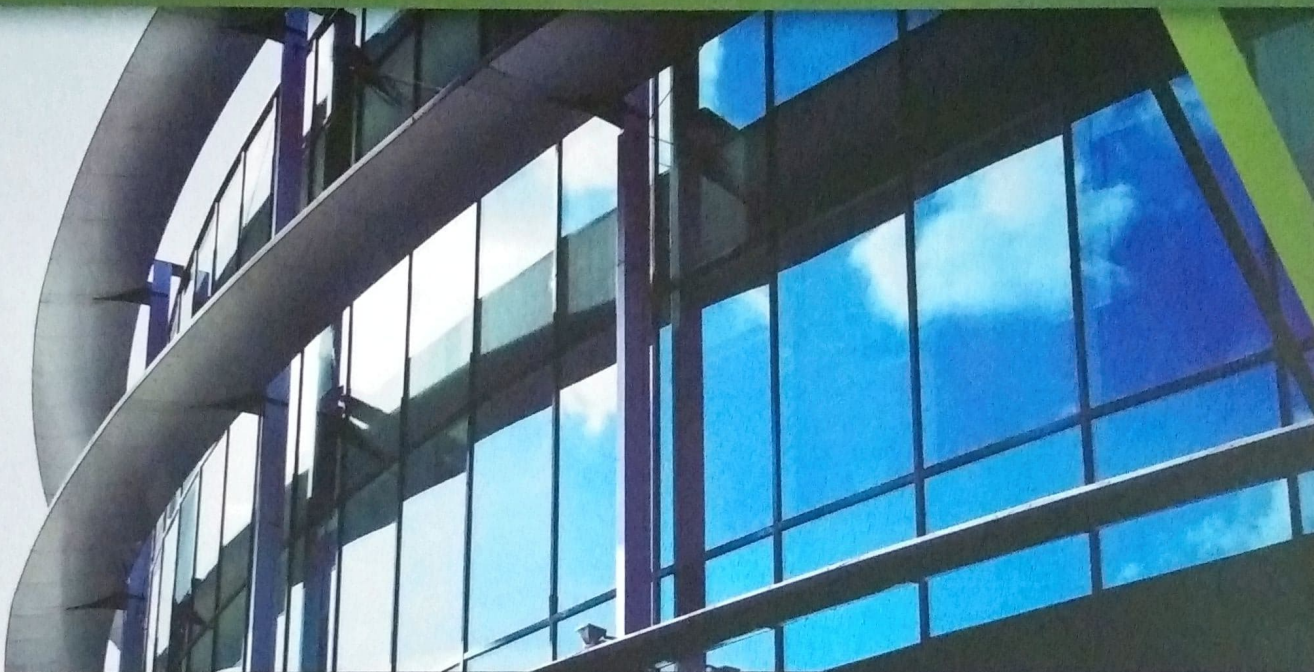
An ISO 9001 : 2015 Certified Co.

Regd. Office : G-23, Sector-1, Bawana Industrial Area, Bawana Delhi-110039 India

Phone : +91-9718834000, 9718734000, 9718834000

Email : [info@panamaptapes.com](mailto:info@panamaptapes.com), Website : [www.panamaptapes.com](http://www.panamaptapes.com)

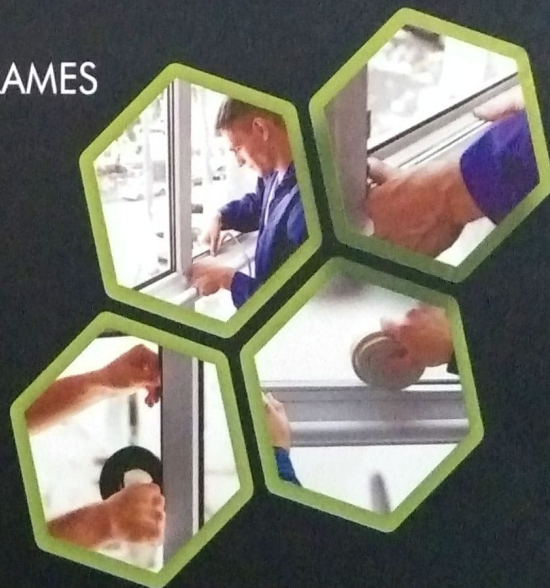
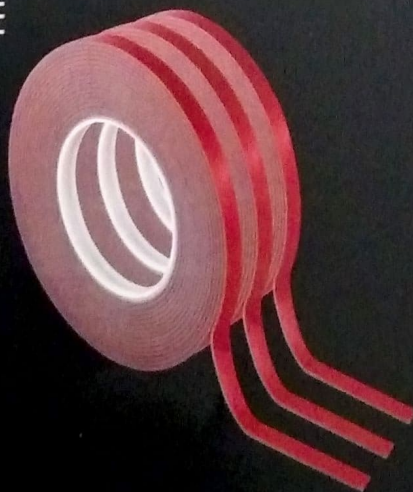
## STRUCTURE GLAZING TAPE



- STICKING GLASS AREAS
- ATTACHING GLASS PANELS TO MATELESS FRAMES
- IT UV RESISTANCE

### USES :-

GLASS PANELS TO METAL  
FRAMES, CURTAIN WALL,  
COMMERCIAL WINDOWS,  
DOORS, SKYLIGHT &  
CANOPY SYSTEMS



SIZE :- 12MM X 5MTR

**PANAMAX TAPES INTERNATIONAL**

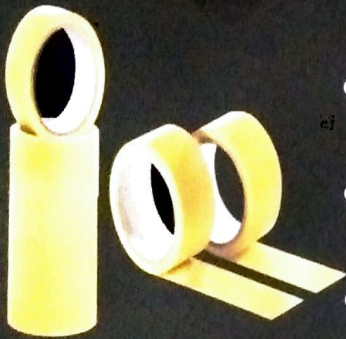
An ISO 9001 : 2015 Certified Co.

Regd. Office : G-23, Sector-1, Bawana Industrial Area, Bawana Delhi-110039 India

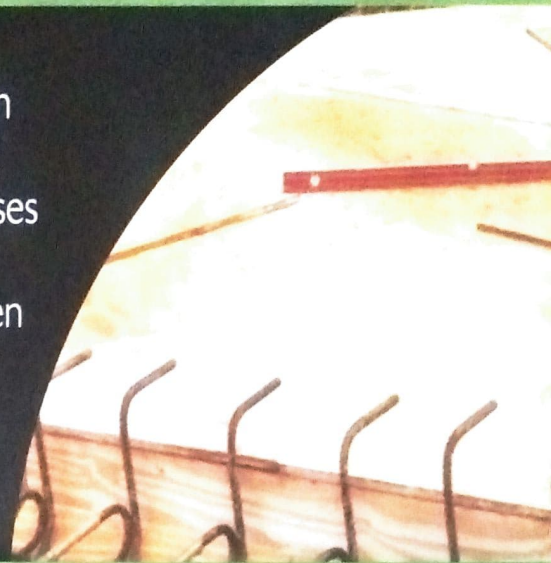
Phone : +91-9718634000, 9718734000, 9718834000

Email.: [info@panamaptapes.com](mailto:info@panamaptapes.com), Website : [www.panamaptapes.com](http://www.panamaptapes.com)

## SLAB CASTING / SHUTTERING TAPES



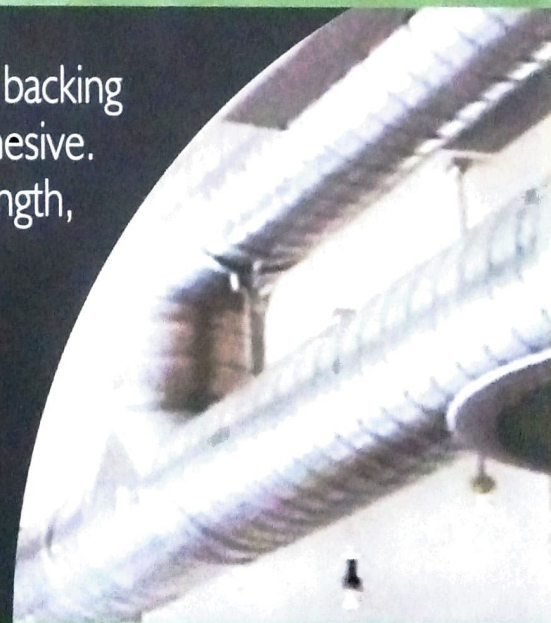
- Shuttering tape is a very strong and high adhesive product.
- Specially designed for shuttering purposes before slab cast.
- Can fill joints and empty spaces between two ply.
- Prevent leakage from shuttering joints.
- Available in various colors and sizes.



## CLOTH DUCT TAPE



- Comes with textile fiber doth as the backing and coated with synthetic rubber adhesive.
- Strong adhesion and high tensile strength, protecting the surface from rust, humidity and water.
- Widely used in pipe wrapping water proofing and heavy packaging.
- Available in various color and sizes.



ALL REGULAR / CUSTOMIZED  
SIZE AVAILABLE

**PANAMAX TAPES INTERNATIONAL**

An ISO 9001 : 2008 Certified Co.

Regd. Office : G-23, Sector-1, Bawana Industrial Area, Delhi-110039

Phone : +91-9718634000, 9718734000, 9718834000

Email : [info@panamaptapes.com](mailto:info@panamaptapes.com), Website : [www.panamaptapes.com](http://www.panamaptapes.com)

## ALUMINIUM FOIL TAPE

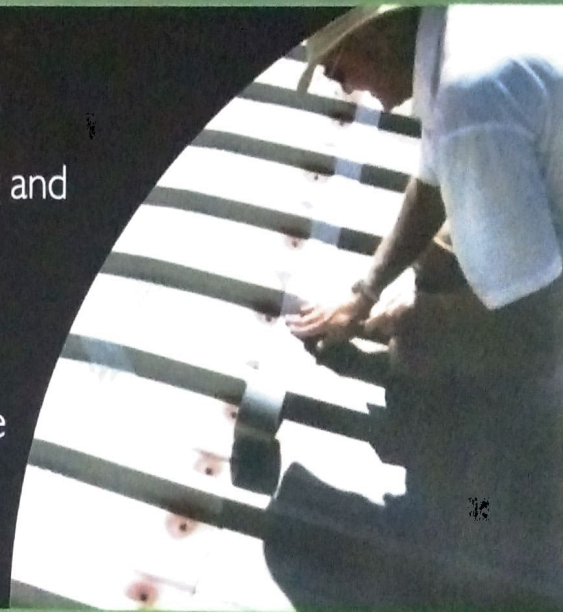
30 Micron    50 Micron



80 Micron



- Self adhesive roofing, waterproofing with a reflective aluminium surface.
- For roofing, waterproofing, patching and repair or any job requiring tough weatherproof protection.
- Reflects heat to keep interior cool and reduces utility bills.
- Various sizes, thickness and adhesive properties available as per your requirements.



## CROSS/MONO FILAMENT TAPES

- A self adhesive tape which has been specially designed for applications requiring a high breaking strength.
- In built film backing and rubber adhesive.
- It can replace metal and polypropylene strapping to great advantage.
- For packing of heavy weight cartons.
- For pallet sizing.
- For strapping.
- For sealing of metal coils and pipe bundling.



ALL REGULAR / CUSTOMIZED  
SIZE AVAILABLE

**PANAMAX TAPES INTERNATIONAL**

An ISO 9001 : 2008 Certified Co.

Regd. Office : G-23, Sector-1, Bawana Industrial Area, Delhi-110039

Phone : +91-9718634000, 9718734000, 9718834000

Email : [info@panamaptapes.com](mailto:info@panamaptapes.com), Website : [www.panamaptapes.com](http://www.panamaptapes.com)

## ANTI SLIP TAPE

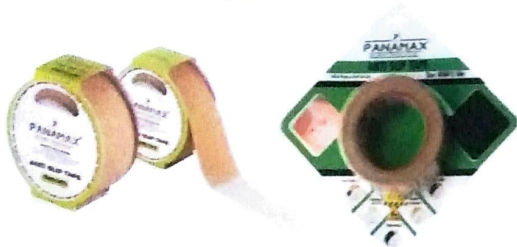
### GLOW IN DARK/LUMINOUS



### BLACK



### TRANSPARENT ANTI SLIP



### YELLOW AND BLACK

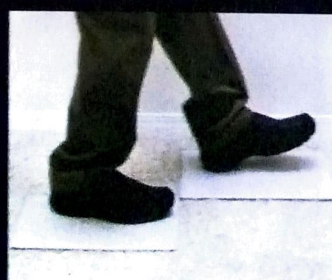


### SPECIAL ANTI SLIP TAPE FOR :-

WET AREA  
 BARE FOOTED  
 BATHROOM  
 SWIMMING POOL



SIZE :- ALL  
 REGULAR/CUSTOMIZED  
 SIZE AVAILABLE



SIZE :- 48MM X 5MTR

**PANAMAX TAPES INTERNATIONAL**

An ISO 9001 : 2015 Certified Co.

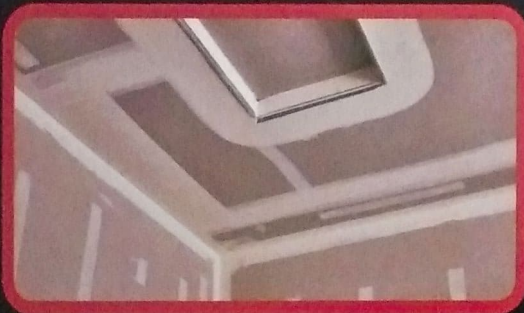
Regd. Office : G-23, Sector-1, Bawana Industrial Area, Bawana Delhi-110039 India

Phone : +91-9718634000, 9718734000, 9718834000

Email : [info@panamaptapes.com](mailto:info@panamaptapes.com), Website : [www.panamaptapes.com](http://www.panamaptapes.com)

## DRY WALL JOINT TAPE

- FIBER GLASS MESH FOR STRONG JOINTS
- ELIMINATES PLASTER AND BUBBLES
- ELIMINATES PRE PLASTERING
- QUICK & EASY
- IDEAL TO COVER JOINTS, CRACKS & HOLES



SIZE :- 48MM X 91MTR (100 YD )  
48MM X 45.5M (50YD)

**PANAMAX TAPES INTERNATIONAL**

An ISO 9001 : 2015 Certified Co.

Regd. Office : G-23, Sector-1, Bawana Industrial Area, Bawana Delhi-110039 (INDIA)

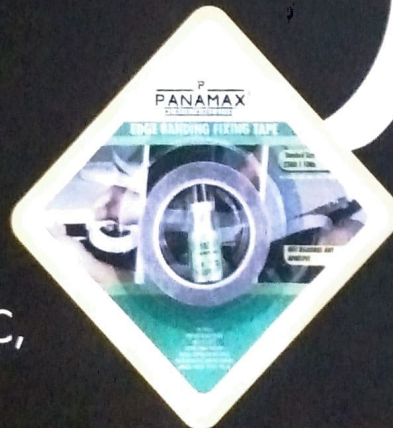
Phone : +91-9718634000, 9718734000, 9718834000

Email.: [info@panamaptapes.com](mailto:info@panamaptapes.com), Website : [www.panamaptapes.com](http://www.panamaptapes.com)

# EDGE BANDING TAPE

- NOT REQUIRED ANY WHITE GLUE/GUM
- TIME SAVING
- VERY FAST & EASY TO USE
- PASTE IT & FIX IT
- FASTING FIRMLY TOGETHER
- WATER & TEMPERATURE RESISITANCE
- FOR BONDING EDGE BANDING TO WOOD, LAMINATE, VENEER, ACRYLIC, PVC, etc.

**BOND  
FIRMLY**



“चिपकायें  
चुटकी में”



Size 22mm x 10mtr

**PANAMAX TAPES INTERNATIONAL**

An ISO 9001 : 2008 Certified Co.

Regd. Office : G-23, Sector-1, Bawana Industrial Area, Bawana Delhi-110039 (INDIA)

Phone : +91-9718634000, 9718734000, 9718834000

Email: info@panamaptapes.com, Website : www.panamaptapes.com

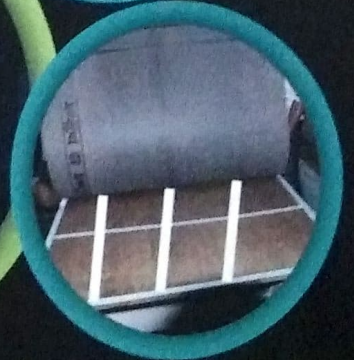
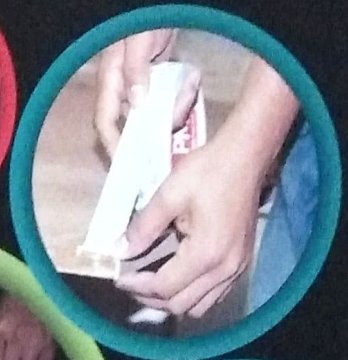
# LAM BOND TAPE



PASTE YOUR  
LAMINATES  
& SUNMICA



- NOT REQUIRED ANY WHITE GLUE/GUM
- TIME SAVING
- VERY FAST & EASY TO USE
- PASTE IT & FIX IT
- EASY TO REMOVE
- FASTING FIRMLY TOGETHER
- LAMINATE TO LAMINATE
- PLY WOOD TO LAMINATE



Size : 24mmx 15mtr  
30mmx 20mtr  
All customized sizes available

**PANAMAX TAPES INTERNATIONAL**

An ISO 9001 : 2008 Certified Co.

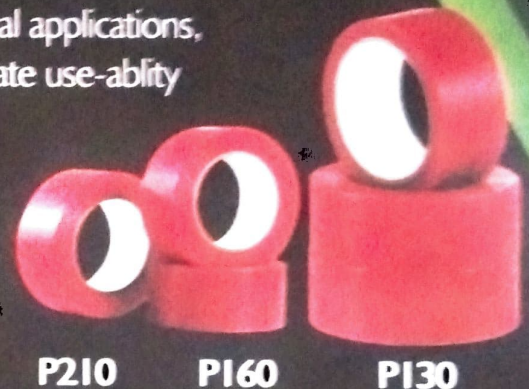
Regd. Office : G-23, Sector-1, Bawana Industrial Area, Bawana Delhi-110039 (INDIA)

Phone : +91-9718634000, 9718734000, 9718834000

Email : [info@panamaptapes.com](mailto:info@panamaptapes.com), Website : [www.panamaptapes.com](http://www.panamaptapes.com)

## DOUBLE SIDED RED POLYESTER TAPE

- Very strong adhesive tape, suitable for high tensile and long time aging applications.
- This tape provides a strong rigid bond for the most demanding external applications.
- Ideal for application requiring an almost transparent finish and immediate use-ability right after assembly.
- Most suitable for fixing of reflection foil to LCD frame, splicing of thin plastic films, flex to flex joining.
- Mounting of ABS plastic parts in the card industries.
- Mounting of decorative profile and molding in furniture industries.
- Available in various grade @ P 210, P 160, P 130.



## TISSUE TAPES

### SOLVENT & HOTMELT TISSUE TAPE

- Made from non-woven tissue paper coated on both sides with acrylic, hot melt and rubber adhesive.
- Excellent quick - double-stick.
- Strong adhesion, easy to tear
- A perfect substitute to replace glue for bounding.
- Non-deteriorating.
- Ideal for holding and pasting.



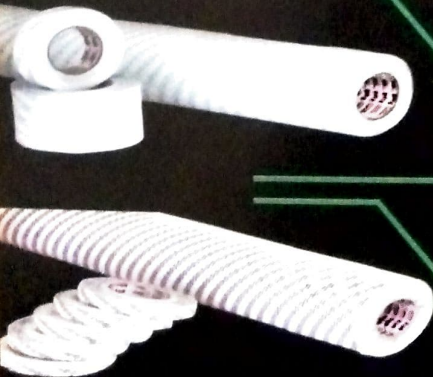
### PMX 500 & PMX 501 TISSUE TAPES

- PMX 500 110 $\pm$ 5micron & PMX 501 100 $\pm$ 5micron double sided tissue tapes.
- Anti-rebounding & anti-warping.
- Suitable for punching name plate & film switches fixing.



### PMX 5000 TISSUE TAPE

- High intensity up to 180° C heat resist and 160micron double sided tissue tape.
- High adhesive non-woven tissue offer superior adhesive strength and excellent in fixing of parts.
- Anti-rebounding & anti-warping
- Bonding punched metal name plates
- Bonding ABS decorative panels and fixing plastic display panel



ALL REGULAR / CUSTOMIZED  
SIZE AVAILABLE

**PANAMAX TAPES INTERNATIONAL**

An ISO 9001 : 2008 Certified Co.

Regd. Office : G-23, Sector-1, Bawana Industrial Area, Bawana Delhi-110039 (INDIA)

Phone : +91-9718634000, 9718734000, 9718834000

Email: info@panamaptapes.com, Website : www.panamaptapes.com